

**INSTRUMENT  
APPROACH  
CHART - ICAO**

**AERODROME ELEV 59 ft**  
HEIGHTS RELATED TO  
THR RWY 14L - ELEV 38 ft

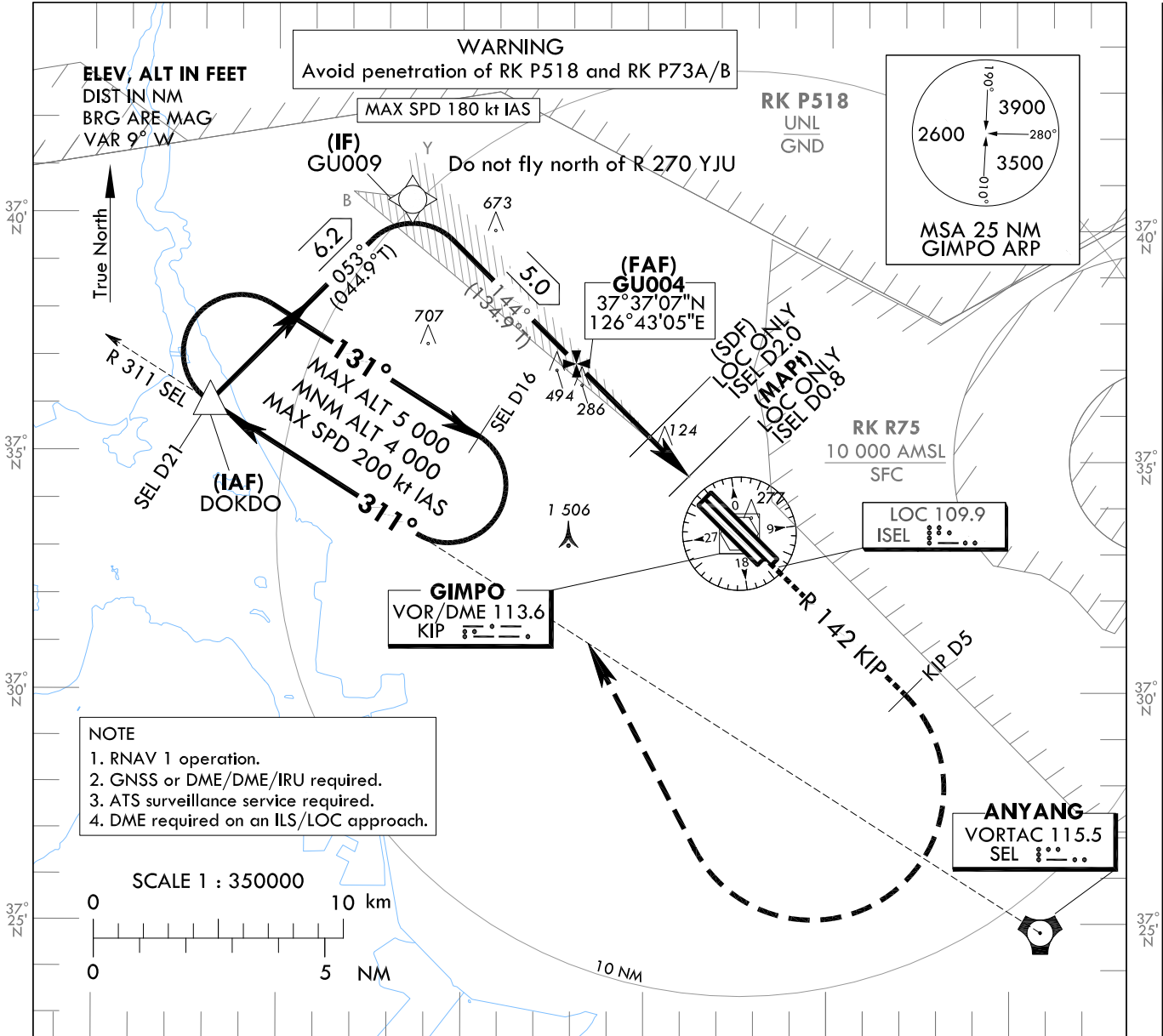
SEOUL APP 119.75  
119.1  
GIMPO TWR 118.1  
118.05

**SEOUL/Gimpo Intl(RKSS)  
ILS Z or LOC Z RWY 14L**

Note : Approach under ICAO Flight Procedures.

126°40' E

126°50' E



- NOTE**
1. RNAV 1 operation.
  2. GNSS or DME/DME/IRU required.
  3. ATS surveillance service required.
  4. DME required on an ILS/LOC approach.

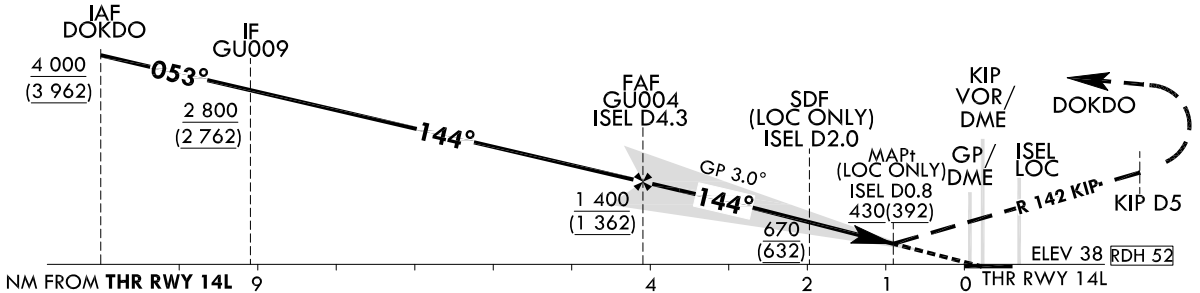
SCALE 1 : 350000



RECOMMENDED PROFILE	DME ISEL	4	3	2
Final Approach Gradient 5.24%, 318 ft/NM	ALT(HGT)	1 336 (1 298)	1 018 (980)	700 (662)

TRANSITION ALT 14 000  
TRANSITION LVL FL 140

- NOTE**
1. Missed approach turn limited to 220 kt IAS maximum.



CATEGORY	DA(DH)/MDA(MDH)	A	B	C	D	MISSED APPROACH	
							Full
Straight-in	CAT-I	238 (200)	RVR 550 m, VIS 800 m				Climb to 4 000 ft on RWY HDG to R 142 KIP/D5 then turn right to intercept and proceed via R 311 SEL to DOKDO. Hold as published. * Timing Not authorized for defining MAPt. * Circling Not authorized.
		430 (392)	1 200 m	1 100 m	1 800 m		
	430 (392)	1 200 m	1 100 m	1 800 m			
	430 (392)	1 200 m	1 100 m	1 800 m			

Change : Information of instrument approach procedure for RWY 14L.

SEOUL/Gimpo Intl(RKSS)  
ILS Z or LOC Z RWY 14L

AERONAUTICAL DATA TABULATION

ILS/LOC Z Approach to RWY 14L from DOKDO		
Fix / Point		Coordinates
DOKDO(IAF)		37°36'17.1"N 126°33'07.1"E
GU009(IF)	BRG 53.48°/6.20 NM	37°40'40.0"N 126°38'36.6"E
GU004(FAF)	BRG 143.54°/4.30 NM ISEL	37°37'07.1"N 126°43'04.8"E
D2.0 ISEL (SDF LOC ONLY)	BRG 143.54°/2.00 NM ISEL	37°35'32.2"N 126°45'04.3"E
D0.8 ISEL (MAPt LOC ONLY)	BRG 143.54°/0.80 NM ISEL	37°34'41.1"N 126°46'08.4"E
THR RWY 14L		37°34'14.55"N 126°46'41.80"E
ISEL DME		37°34'03.8"N 126°46'48.1"E
KIP VOR/DME		37°33'27.1"N 126°47'31.3"E
D5 KIP	R 142 KIP/5.00 NM	37°29'58.1"N 126°52'02.1"E
DOKDO	R 311 SEL/21.00 NM	37°36'17.1"N 126°33'07.1"E

Change : Information of instrument approach procedure for RWY 14L.

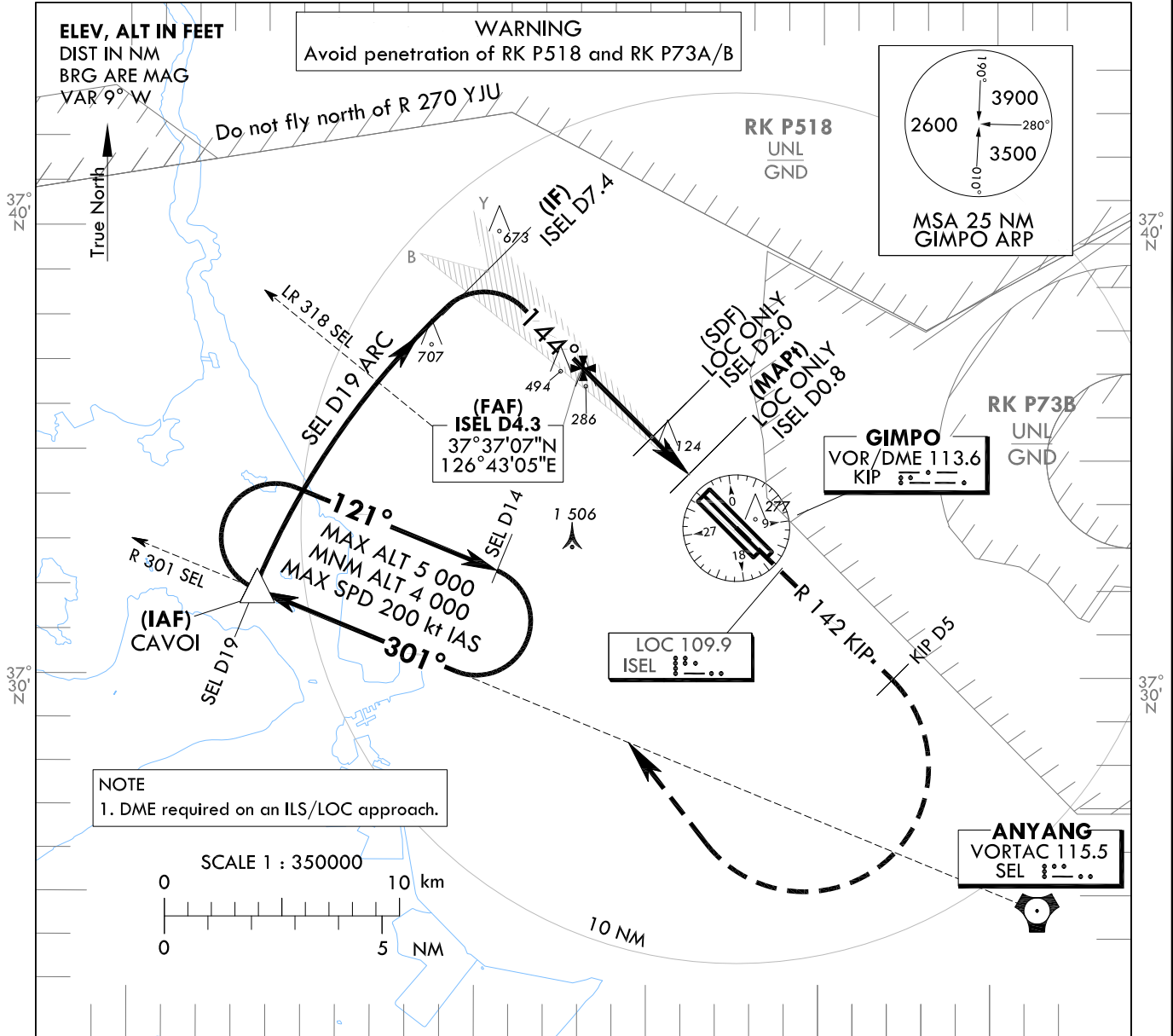
**INSTRUMENT  
APPROACH  
CHART - ICAO**

**AERODROME ELEV 59 ft**  
HEIGHTS RELATED TO  
THR RWY 14L - ELEV 38 ft

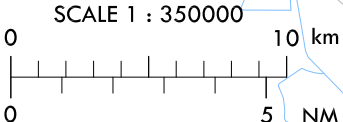
SEOUL APP 119.75  
119.1  
GIMPO TWR 118.1  
118.05

**SEOUL/Gimpo Intl(RKSS)  
ILS Y or LOC Y RWY 14L**

Note : Approach under ICAO Flight Procedures. 126°40'E 126°50'E

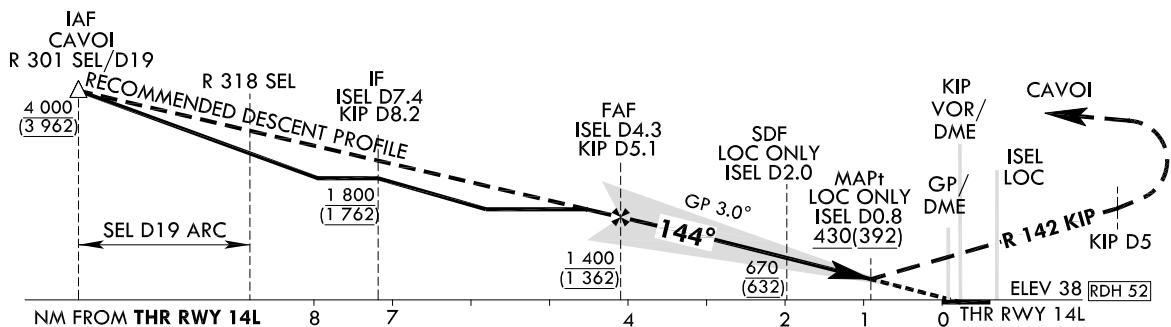


NOTE  
1. DME required on an ILS/LOC approach.



RECOMMENDED PROFILE		DME ISEL	4	3	2	TRANSITION ALT 14 000 TRANSITION LVL FL 140
Final Approach Gradient 5.24%, 318 ft/NM		ALT(HGT)	1 336 (1 298)	1 018 (980)	700 (662)	

NOTE  
1. Missed approach turn limited to 220 kt IAS maximum.



CATEGORY	DA(DH)/MDA(MDH)	A	B	C	D	MISSED APPROACH	
							Full
Straight-in	CAT-I	Full	238 (200)	RVR 550 m, VIS 800 m			Climb to 4 000 ft on RWY HDG to R 142 KIP/D5 then turn right to intercept and proceed via R 301 SEL to CAVOI. Hold as published. * Timing Not authorized for defining MAPt. * Circling Not authorized.
		ALS INOP		1 200 m			
	LOC	Full	430 (392)	1 100 m			
		ALS INOP		1 800 m			

Change : Information of instrument approach procedure for RWY 14L.

SEOUL/Gimpo Intl(RKSS)  
ILS Y or LOC Y RWY 14L

AERONAUTICAL DATA TABULATION

ILS/LOC Y Approach to RWY 14L from CAVOI		
Fix / Point		Coordinates
CAVOI(IAF)		37°32'02.0"N 126°33'37.0"E
D7.4 ISEL(IF)	SEL R 301/19.00 NM SEL	37°39'20.6"N 126°40'16.7"E
D4.3 ISEL(FAF)	BRG 143.54°/4.30 NM ISEL	37°37'07.1"N 126°43'04.8"E
D2.0 ISEL (SDF LOC ONLY)	BRG 143.54°/2.00 NM ISEL	37°35'32.2"N 126°45'04.3"E
D0.8 ISEL (MAPt LOC ONLY)	BRG 143.54°/0.80 NM ISEL	37°34'41.1"N 126°46'08.4"E
THR RWY 14L		37°34'14.55"N 126°46'41.80"E
ISEL DME		37°34'03.8"N 126°46'48.1"E
KIP VOR/DME		37°33'27.1"N 126°47'31.3"E
D5 KIP	R 142 KIP/5.00 NM	37°29'58.1"N 126°52'02.1"E
CAVOI	R 301 SEL/19.00 NM	37°32'02.0"N 126°33'37.0"E

Change : Information of instrument approach procedure for RWY 14L.

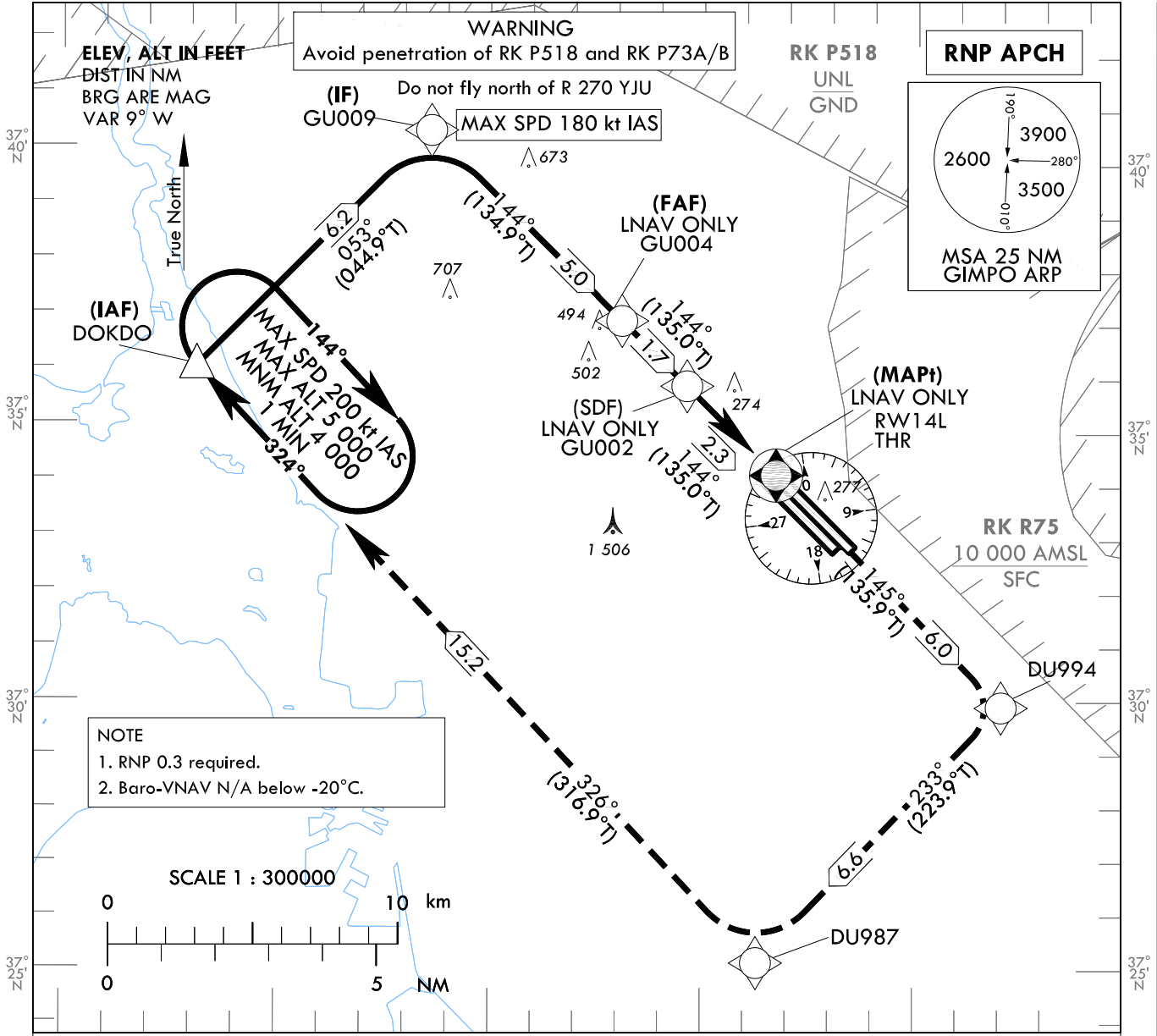
**INSTRUMENT  
APPROACH  
CHART - ICAO**

**AERODROME ELEV 59 ft**  
HEIGHTS RELATED TO  
THR RWY 14L - ELEV 38 ft

SEOUL APP 119.75  
119.1  
GIMPO TWR 118.1  
118.05

**SEOUL/Gimpo Intl(RKSS)  
RNP RWY 14L**

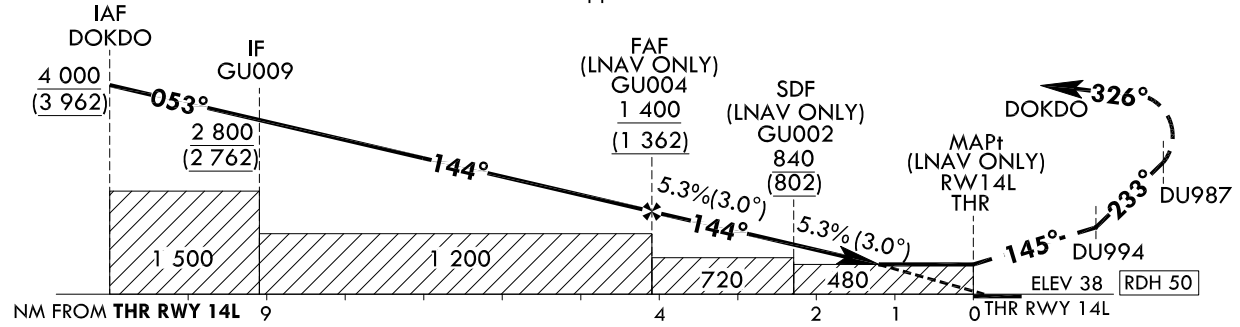
Note : Approach under ICAO Flight Procedures.



TRANSITION ALT 14 000  
TRANSITION LVL FL 140

**MISSED APPROACH**  
Climb to 4 000 ft. Track to DU994, DU987 and DOKDO. Hold as published.

NOTE  
1. Missed approach turn limited to 220 kt IAS maximum.



CATEGORY		MDA(H)/DA(H)	A	B	C	D	Knots					
LNAV	FULL	480 (442)		1 400 m			Rate of descent V/V fpm	60	90	120	150	180
	ALS INOP			2 100 m				318	478	637	796	955
LNAV/VNAV	FULL	450 (412)		1 200 m			* Timing Not authorized for defining MAPt. * Circling Not authorized.					
	ALS INOP			1 900 m								

Change : Information of instrument approach procedure for RWY 14L.

AERONAUTICAL DATA TABULATION

Instrument Approach Procedure Coding Tables

RNP RWY 14L

Serial Number	Path Descriptor	Waypoint Identifier	Fly-over	Course/Track °M(°T)	Distance (NM)	Turn direction	Altitude (ft)	Speed (kt)	Coordinates	VPA/TCH	Navigation specification	Remarks
001	IF	DOKDO	-	-	-	-	+4 000	-	37°36'17.1"N 126°33'07.1"E	-	RNP APCH	IAF
002	TF	GU009	-	053 (044.9)	6.2	-	+2 800	-180	37°40'40.0"N 126°38'36.6"E	-	RNP APCH	IF
003	TF	GU004	-	144 (134.9)	5.0	-	+1 400	-	37°37'07.1"N 126°43'04.8"E	-	RNP APCH	FAF
004	TF	GU002	-	144 (135.0)	1.7	-	+840	-	37°35'54.2"N 126°44'36.6"E	-	RNP APCH	SDF
005	TF	RW14L	Y	144 (135.0)	2.3	-	+480	-	37°34'14.55"N 126°46'41.80"E	-3.01/50	RNP APCH	MAPt
006	TF	DU994	-	145 (135.9)	6.0	-	-	-	37°29'54.5"N 126°51'57.6"E	-	RNP APCH	-
007	TF	DU987	-	233 (223.9)	6.6	-	-	-220	37°25'09.3"N 126°46'13.6"E	-	RNP APCH	-
008	TF	DOKDO	Y	326 (316.9)	15.2	-	+4 000	-220	37°36'17.1"N 126°33'07.1"E	-	RNP APCH	-
009	HIM	DOKDO	Y	324 (314.9)	-	R	-5 000 +4 000	-200	37°36'17.1"N 126°33'07.1"E	-	RNP APCH	<sup>1</sup> min (Outbound timing)

Change : Information of instrument approach procedure for RWY 14L.

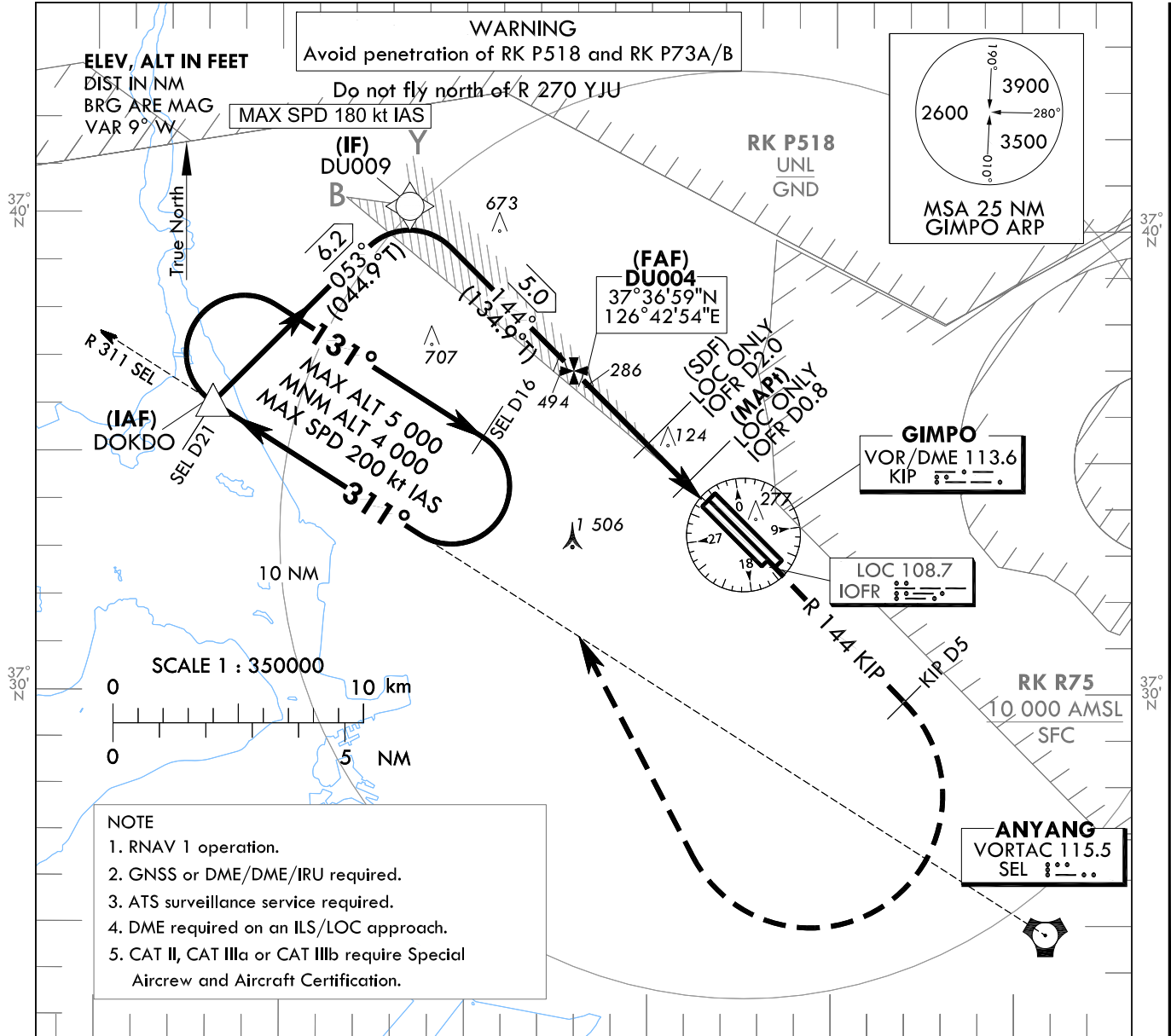
**INSTRUMENT  
APPROACH  
CHART - ICAO**

**AERODROME ELEV 59 ft**  
HEIGHTS RELATED TO  
THR RWY 14R - ELEV 34 ft

SEOUL APP 119.75  
119.1  
GIMPO TWR 118.1  
118.05

**SEOUL/Gimpo Intl(RKSS)**  
**ILS or LOC RWY 14R**  
**CAT II & III**

Note : Approach under ICAO Flight Procedures.

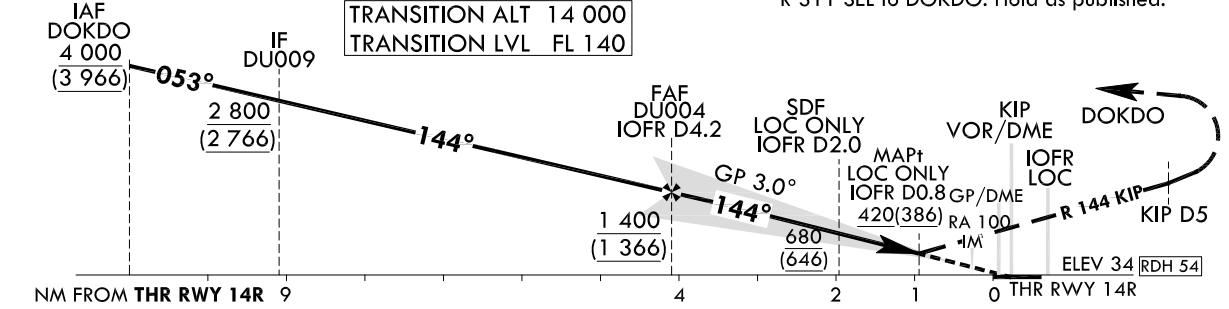


**NOTE**  
1. RNAV 1 operation.  
2. GNSS or DME/DME/IRU required.  
3. ATS surveillance service required.  
4. DME required on an ILS/LOC approach.  
5. CAT II, CAT IIIa or CAT IIIb require Special  
Aircrew and Aircraft Certification.

126°30' E                                  126°40' E                                  126°50' E

RECOMMENDED PROFILE		DME IOFR	4	3	2
Final Approach Gradient 5.24%, 318 ft/NM		ALT(HGT)	1 336 (1 302)	1 018 (984)	700 (666)

**MISSED APPROACH**  
Climb to 4 000 ft on RWY HDG to R 144 KIP/D5 then turn right to intercept and proceed via R 311 SEL to DOKDO. Hold as published.



CATEGORY	DA(DH)/MDA(MDH)	A				B				C				D			
		RVR		VIS		RVR		VIS		RVR		VIS		RVR		VIS	
Straight-in	CAT-I	FULL	234 (200)				RVR 550 m, VIS 800 m										
		ALS INOP					1 200 m										
	LOC	GP INOP	420 (386)				1 100 m										
		GP & ALS INOP					1 800 m										
		CAT II	134(100)				300 m				300 m <sup>1</sup> /350 m						
CAT IIIa					175 m												
CAT IIIb					75 m <sup>2</sup> /125 m												

**NOTE**  
1. Missed approach turn limited to 220 kt IAS maximum.  
2) For CAT D aeroplane conducting an autoland.  
2) Aeroplane use Fail-operational system.  
\* Timing Not authorized for defining MAPt.  
\* Circling Not authorized.

Change : Information of instrument approach procedure for RWY 14R.

SEOUL/Gimpo Intl(RKSS)  
ILS or LOC RWY 14R  
CAT II & III

AERONAUTICAL DATA TABULATION

ILS/LOC Approach to RWY 14R from DOKDO		
Fix / Point	Coordinates	
DOKDO(IAF)	37°36'17.1"N	126°33'07.1"E
DU009(IF) BRG 53.48°/6.00 NM	37°40'31.8"N	126°38'26.2"E
DU004(FAF) BRG 143.53°/4.20 NM IOFR	37°36'59.0"N	126°42'54.3"E
D2.0 IOFR (SDF LOC ONLY) BRG 143.53°/2.00 NM IOFR	37°35'23.9"N	126°44'53.9"E
D0.8 IOFR (MAPt LOC ONLY) BRG 143.53°/0.80 NM IOFR	37°34'32.9"N	126°45'58.1"E
THR RWY 14R	37°34'06.19"N	126°46'31.60"E
IOFR DME	37°34'01.9"N	126°46'44.2"E
KIP VOR/DME	37°33'27.1"N	126°47'31.3"E
D5 KIP R 144 KIP/5.00 NM	37°29'50.7"N	126°51'52.7"E
DOKDO R 311 SEL/21.00 NM	37°36'17.1"N	126°33'07.1"E

Change : Information of instrument approach procedure for RWY 14R.



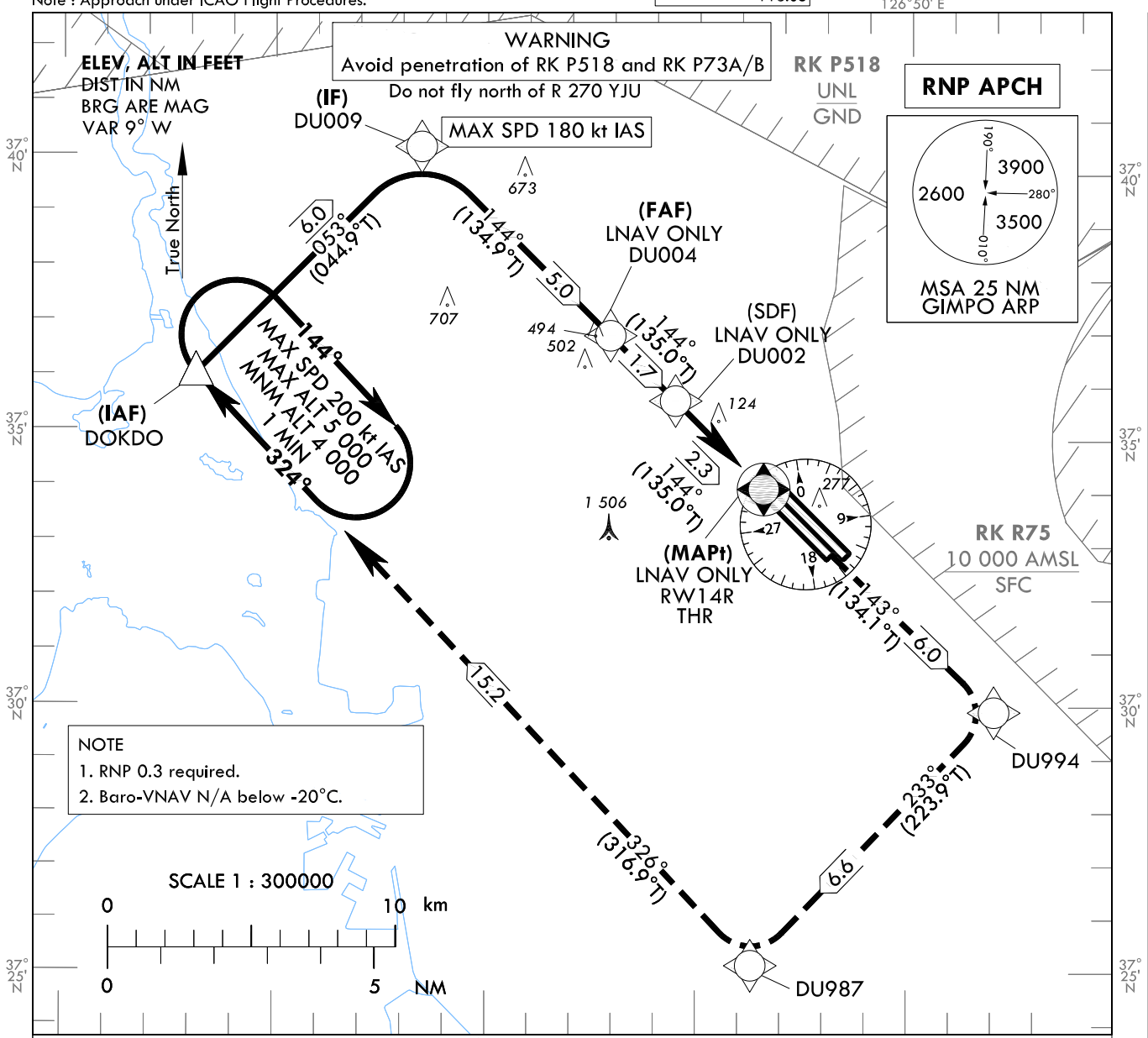
**INSTRUMENT  
APPROACH  
CHART - ICAO**

**AERODROME ELEV 59 ft**  
HEIGHTS RELATED TO  
THR RWY 14R - ELEV 34 ft

SEOUL APP 119.75  
119.1  
GIMPO TWR 118.1  
118.05

**SEOUL/Gimpo Intl(RKSS)  
RNP RWY 14R**

Note : Approach under ICAO Flight Procedures.



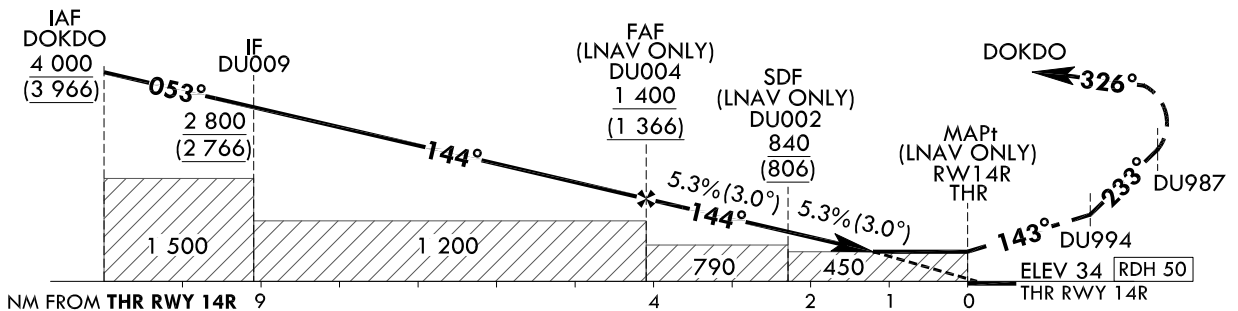
**MISSED APPROACH**

Climb to 4 000 ft. Track to DU994, DU987 and DOKDO. Hold as published.

NOTE

1. Missed approach turn limited to 220 kt IAS maximum.

TRANSITION ALT 14 000  
TRANSITION LVL FL 140



CATEGORY		MDA(H)/DA(H)	A	B	C	D	Knots						
LNAV	FULL	450 (416)		1 200 m			Rate of descent	V/V fpm	318	478	637	796	955
	ALS INOP			1 900 m									
LNAV/VNAV	FULL	450 (416)		1 200 m			* Timing Not authorized for defining MAPt. * Circling Not authorized.						
	ALS INOP			1 900 m									

Change : Information of instrument approach procedure for RWY 14R.

AERONAUTICAL DATA TABULATION

Instrument Approach Procedure Coding Tables

RNP RWY 14R

Serial Number	Path Descriptor	Waypoint Identifier	Fly-over	Course/Track °M(°T)	Distance (NM)	Turn direction	Altitude (ft)	Speed (kt)	Coordinates	VPA/ TCH	Navigation specification	Remarks
001	IF	DOKDO	-	-	-	-	+4 000	-	37°36'17.1"N 126°33'07.1"E	-	RNP APCH	IAF
002	TF	DU009	-	053 (044.9)	6.0	-	+2 800	-180	37°40'31.8"N 126°38'26.2"E	-	RNP APCH	IF
003	TF	DU004	-	144 (134.9)	5.0	-	+1 400	-	37°36'59.0"N 126°42'54.3"E	-	RNP APCH	FAF
004	TF	DU002	-	144 (135.0)	1.7	-	+840	-	37°35'45.6"N 126°44'26.6"E	-	RNP APCH	SDF
005	TF	RW14R	Y	144 (135.0)	2.3	-	+450	-	37°34'06.19"N 126°46'31.60"E	-3.01/50	RNP APCH	MAPt
006	TF	DU994	-	143 (134.1)	6.0	-	-	-	37°29'54.5"N 126°51'57.6"E	-	RNP APCH	-
007	TF	DU987	-	233 (223.9)	6.6	-	-	-220	37°25'09.3"N 126°46'13.6"E	-	RNP APCH	-
008	TF	DOKDO	Y	326 (316.9)	15.2	-	+4 000	-220	37°36'17.1"N 126°33'07.1"E	-	RNP APCH	-
009	HM	DOKDO	Y	324 (314.9)	-	R	-5 000 +4 000	-200	37°36'17.1"N 126°33'07.1"E	-	RNP APCH	1 min (Outbound timing)

Change : Information of instrument approach procedure for RWY 14R.

**INSTRUMENT  
APPROACH  
CHART - ICAO**

**AERODROME ELEV 59 ft**  
HEIGHTS RELATED TO  
THR RWY 32L - ELEV 41 ft

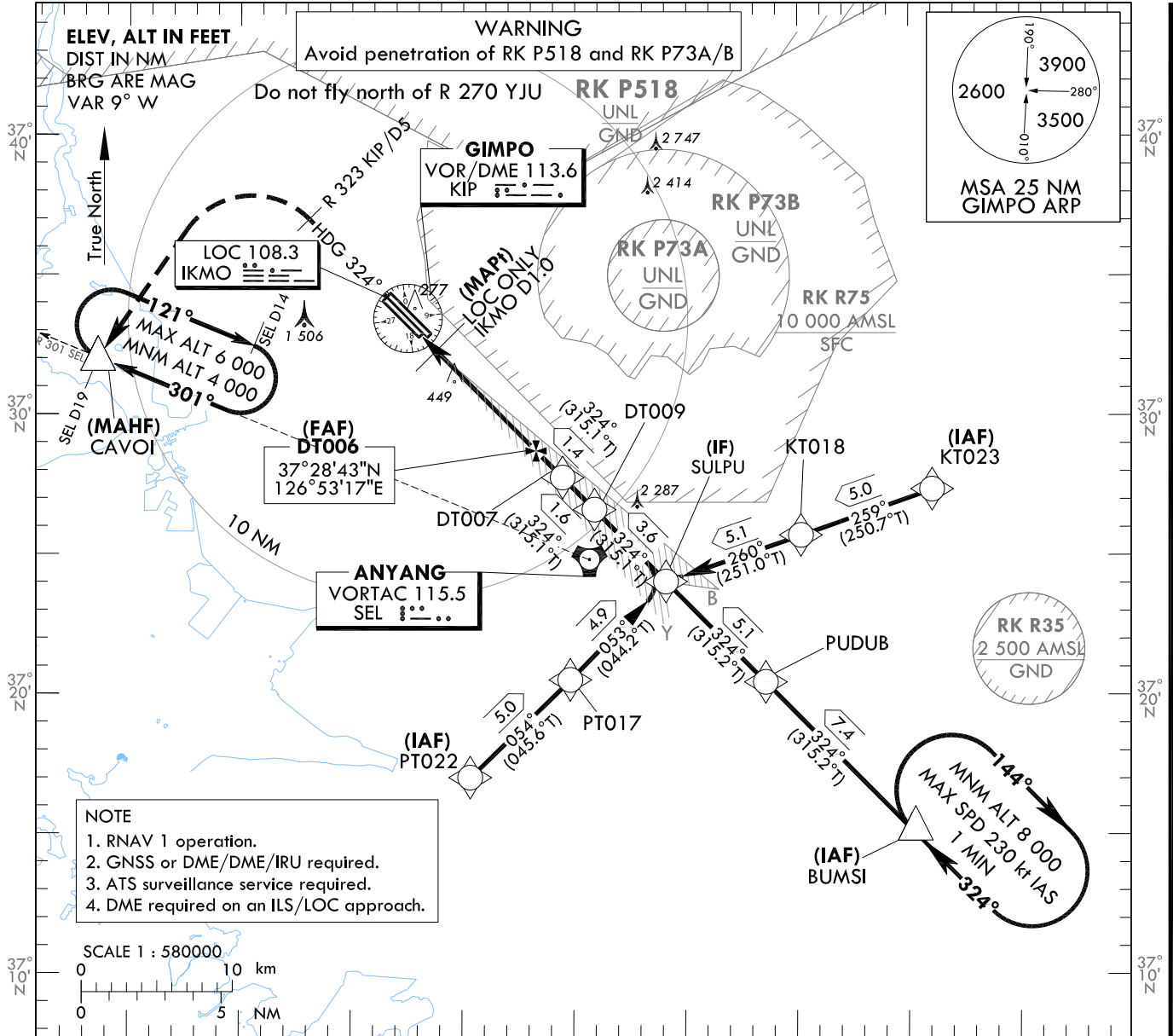
SEOUL APP 119.75  
119.1  
GIMPO TWR 118.1  
118.05

**SEOUL/Gimpo Intl(RKSS)  
ILS or LOC RWY 32L**

Note : Approach under ICAO Flight Procedures.

126°50'E

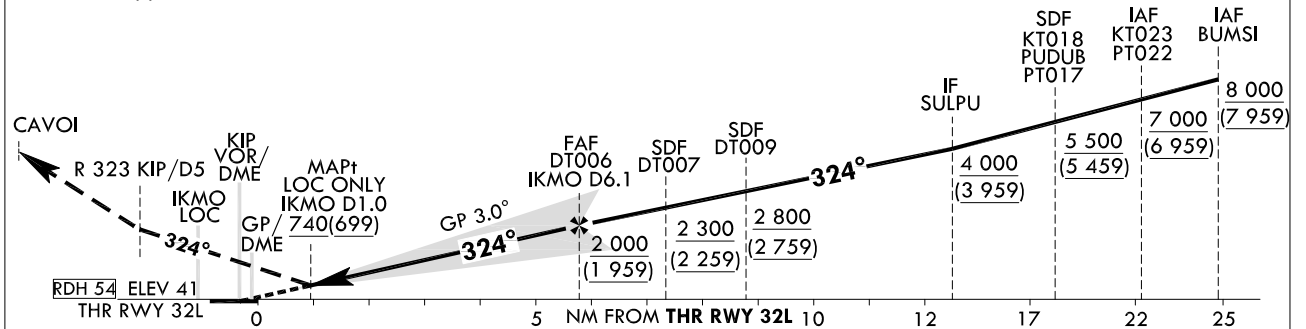
127°10'E



RECOMMENDED PROFILE		DME IKMO	6	5	4	3
Final Approach Gradient 5.24%, 318 ft/NM		ALT(HGT)	1 969 (1 926)	1 655 (1 614)	1 328 (1 287)	1 004 (963)

TRANSITION ALT 14 000  
TRANSITION LVL FL 140

NOTE  
1. Missed approach turn limited to 220 kt IAS maximum.



CATEGORY	DA(DH)/MDA(MDH)	A				B				C				D				
		RVR 550 m, VIS 800 m				1 200 m				2 500 m				3 200 m				
Straight-in	CAT-I	FULL	241 (200)												<b>MISSED APPROACH</b> After 500 ft, Climb on HDG 324° to R 323 KIP/D5. Continue climb to 4 000 ft. Turn left direct to CAVOI. Hold as published. * Timing Not authorized for defining MAPt. * Circling Not authorized.			
		ALS INOP																
	LOC	GP INOP	740 (699)															
		GP & ALS INOP																

Change : Information of instrument approach procedure for RWY 32L.

SEOUL/Gimpo Intl(RKSS)  
ILS or LOC RWY 32L

AERONAUTICAL DATA TABULATION

ILS/LOC Approach to RWY 32L from KT023 to SULPU(IF)		
Fix / Point		Coordinates
KT023(IAF)		37°27'20.9"N 127°11'04.4"E
KT018(SDF)	BRG 259.29°/5.00 NM	37°25'41.9"N 127°05'11.1"E
SULPU(IF)	BRG 259.60°/5.10 NM	37°24'02.0"N 126°59'08.0"E
ILS/LOC Approach to RWY 32L from BUMSI to SULPU(IF)		
Fix / Point		Coordinates
BUMSI(IAF)		37°15'10.2"N 127°10'09.6"E
PUDUB(SDF)	BRG 323.86°/7.42 NM	37°20'26.5"N 127°03'36.6"E
SULPU(IF)	BRG 323.79°/5.06 NM	37°24'02.0"N 126°59'08.0"E
ILS/LOC Approach to RWY 32L from PT022 to SULPU(IF)		
Fix / Point		Coordinates
PT022(IAF)		37°17'00.6"N 126°50'21.9"E
PT017(SDF)	BRG 54.22°/5.00 NM	37°20'30.7"N 126°54'50.7"E
SULPU(IF)	BRG 52.77°/4.90 NM	37°24'02.0"N 126°59'08.0"E
ILS/LOC Approach to RWY 32L from SULPU(IF) to MAHF		
Fix / Point		Coordinates
DT009(SDF)	BRG 323.72°/9.10 NM IKMO	37°26'36.1"N 126°55'55.6"E
DT007(SDF)	BRG 323.72°/7.50 NM IKMO	37°27'44.9"N 126°54'29.5"E
DT006(FAF)	BRG 323.72°/6.10 NM IKMO	37°28'42.9"N 126°53'17.0"E
D1.0 IKMO (MAPt LOC ONLY)	BRG 323.72°/1.00 NM IKMO	37°32'17.6"N 126°48'48.0"E
THR RWY 32L		37°32'52.83"N 126°48'03.71"E
IKMO DME		37°32'57.4"N 126°47'51.3"E
KIP VOR/DME		37°33'27.1"N 126°47'31.3"E
Climb to 500 ft	HDG 324	-
D5 KIP	R 323 KIP/5.00 NM	37°36'59.7"N 126°43'04.6"E
CAVOI	BRG 223.11°/19.00 NM SEL	37°32'02.0"N 126°33'37.0"E

Change : Information of instrument approach procedure for RWY 32L.

**INSTRUMENT APPROACH CHART - ICAO**

**AERODROME ELEV 59 ft**  
HEIGHTS RELATED TO  
THR RWY 32L - ELEV 41 ft

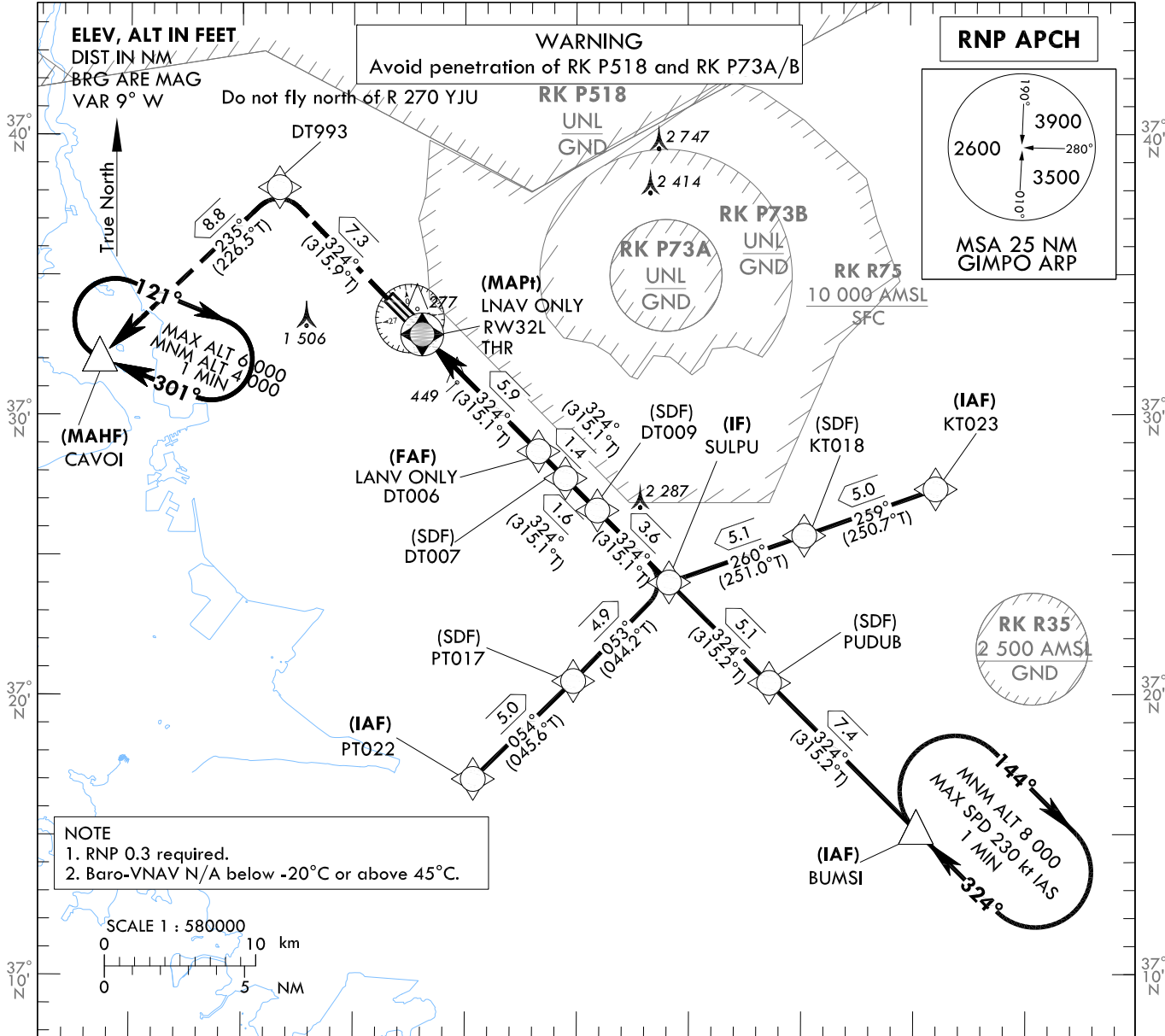
SEOUL APP 119.75  
119.1  
INCHEON TWR 118.2  
118.8

**SEOUL/Gimpo Intl(RKSS)**  
RNP RWY 32L

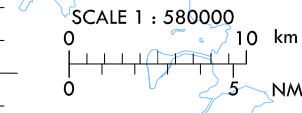
Note : Approach under ICAO Flight Procedures.

126°50'E

127°10'E



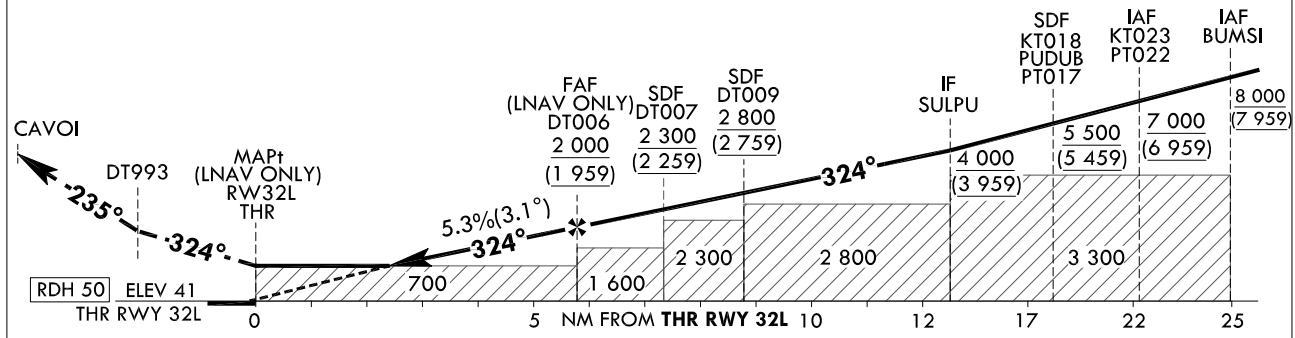
**NOTE**  
1. RNP 0.3 required.  
2. Baro-VNAV N/A below -20°C or above 45°C.



**MISSED APPROACH**

Climb to 4 000 ft. Track to DT993 and CAVOI.  
Hold as published.

TRANSITION ALT 14 000  
TRANSITION LVL FL 140



CATEGORY	MVA(H)/DA(H)	A				B				C				D				Knots	60	90	120	150	180
		Rate of descent	V/V fpm	325	487	649	812	974															
STA	LNAV	FULL	700	2 300 m												* Timing Not authorized for defining MAPt. * Circling Not authorized.							
		ALS INOP	(659)	3 000 m																			
	LNAV/VNAV	FULL	610	1 900 m																			
		ALS INOP	(569)	2 600 m																			

Change : Information of instrument approach procedure for RWY 32L.

SEOUL/Gimpo Intl(RKSS)  
RNP RWY 32L

AERONAUTICAL DATA TABULATION

Instrument Approach Procedure Coding Tables

■ RNP RWY 32L - via KT023 to SULPU(IF)

Serial Number	Path Descriptor	Waypoint Identifier	Fly-over	Course/Track °M(°T)	Distance (NM)	Turn direction	Altitude (ft)	Speed (kt)	Coordinates	VPA/ RDH	Navigation specification	Remarks
001	IF	KT023	-	-	-	-	+7 000	-	37°27'20.9"N 127°11'04.4"E	-	RNP APCH	IAF
002	TF	KT018	-	259 (250.7)	5.0	-	+5 500	-	37°25'41.9"N 127°05'11.1"E	-	RNP APCH	SDF
003	TF	SULPU	-	260 (251.0)	5.1	-	+4 000	-	37°24'02.0"N 126°59'08.0"E	-	RNP APCH	IF

■ RNP RWY 32L - via BUMSI to SULPU(IF)

Serial Number	Path Descriptor	Waypoint Identifier	Fly-over	Course/Track °M(°T)	Distance (NM)	Turn direction	Altitude (ft)	Speed (kt)	Coordinates	VPA/ RDH	Navigation specification	Remarks
001	IF	BUMSI	-	-	-	-	+8 000	-	37°15'10.2"N 127°10'09.6"E	-	RNP APCH	IAF
002	TF	PUDU8	-	324 (315.2)	7.4	-	+5 500	-	37°20'26.5"N 127°03'36.6"E	-	RNP APCH	SDF
003	TF	SULPU	-	324 (315.2)	5.1	-	+4 000	-	37°24'02.0"N 126°59'08.0"E	-	RNP APCH	IF

■ RNP RWY 32L - via PTO22 to SULPU(IF)

Serial Number	Path Descriptor	Waypoint Identifier	Fly-over	Course/Track °M(°T)	Distance (NM)	Turn direction	Altitude (ft)	Speed (kt)	Coordinates	VPA/ RDH	Navigation specification	Remarks
001	IF	PT022	-	-	-	-	+7 000	-	37°17'00.6"N 126°50'21.9"E	-	RNP APCH	IAF
002	TF	PT017	-	054 (045.6)	5.0	-	+5 500	-	37°20'30.7"N 126°54'50.7"E	-	RNP APCH	SDF
003	TF	SULPU	-	053 (044.2)	4.9	-	+4 000	-	37°24'02.0"N 126°59'08.0"E	-	RNP APCH	IF

■ RNP RWY 32L - via SULPU(IF) to MAHF

Serial Number	Path Descriptor	Waypoint Identifier	Fly-over	Course/Track °M(°T)	Distance (NM)	Turn direction	Altitude (ft)	Speed (kt)	Coordinates	VPA/ RDH	Navigation specification	Remarks
003	TF	SULPU	-	-	-	-	+4 000	-	37°24'02.0"N 126°59'08.0"E	-	RNP APCH	IF
004	TF	DT009	-	324 (315.1)	3.6	-	+2 800	-	37°26'36.1"N 126°55'55.6"E	-	RNP APCH	SDF
005	TF	DT007	-	324 (315.1)	1.6	-	+2 300	-	37°27'44.9"N 126°54'29.5"E	-	RNP APCH	SDF
006	TF	DT006	-	324 (315.1)	1.4	-	+2 000	-	37°28'42.9"N 126°53'17.0"E	-	RNP APCH	FAF
007	TF	RW32L	Y	324 (315.1)	5.9	-	+700	-	37°32'52.83"N 126°48'03.71"E	-3.06/50	RNP APCH	MAPt
008	TF	DT993	-	324 (315.9)	7.3	-	-	-	37°38'07.5"N 126°41'39.6"E	-	RNP APCH	-
009	TF	CAVOI	Y	235 (226.5)	8.8	-	+4 000	-	37°32'02.0"N 126°33'37.0"E	-	RNP APCH	-

HOLDING PROCEDURE

Holding Identification	Path Descriptor	Waypoint Identifier	Fly-over	Course/Track °M(°T)	Time (min)	Turn direction	Altitude (ft)	Speed (kt)	Coordinates	VPA/ RDH	Navigation specification	Remarks
RNP RWY 32L	HM	BUMSI	Y	324 (315.2)	1	R	+8 000	-230	37°15'10.2"N 127°10'09.6"E	-	RNAV 1	-
	HM	CAVOI	Y	301 (292.2)	1	R	-6 000 +4 000	-	37°32'02.0"N 126°33'37.0"E	-	RNAV 1	-

Change : Information of instrument approach procedure for RWY 32L.

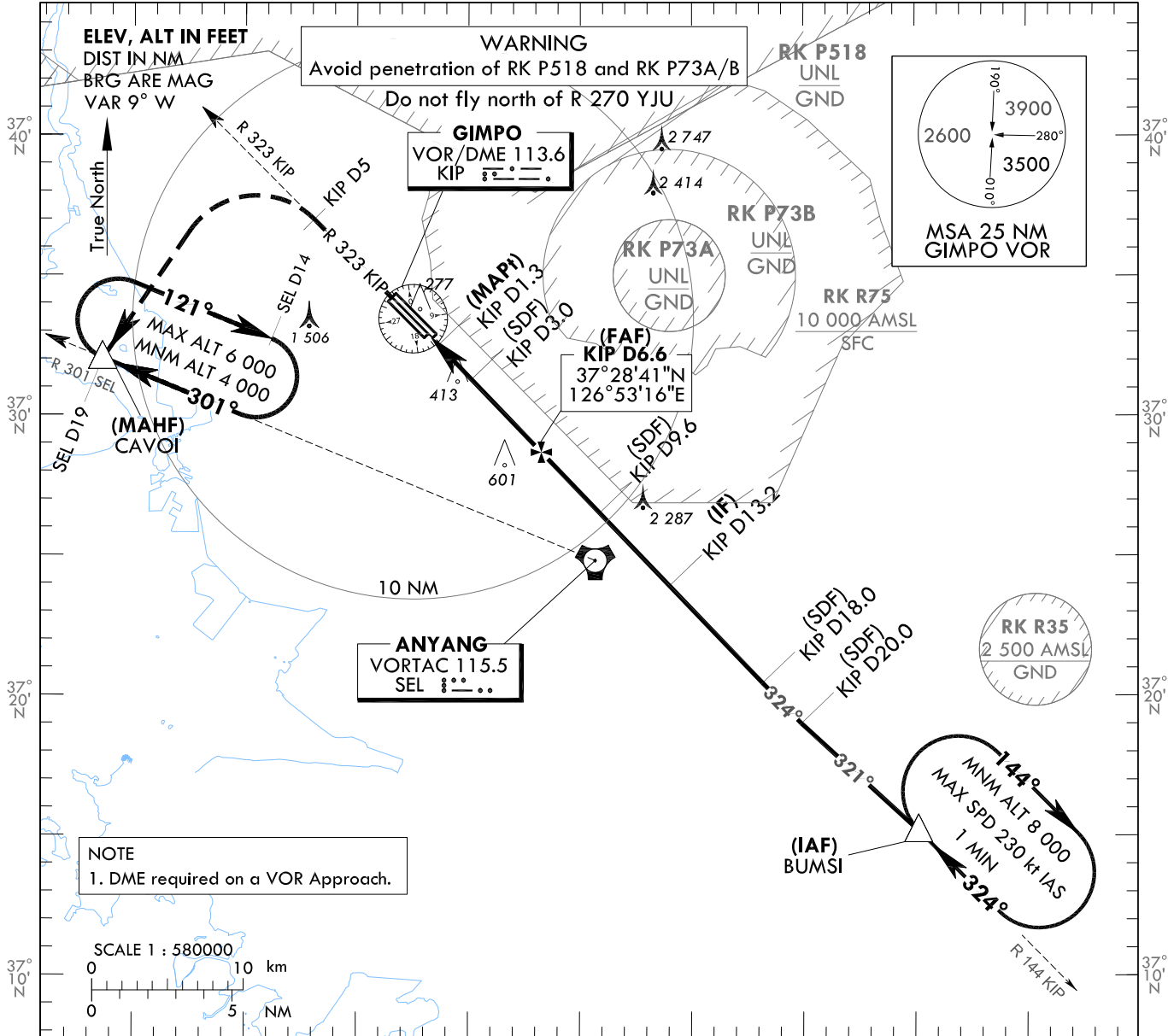
**INSTRUMENT  
APPROACH  
CHART - ICAO**

**AERODROME ELEV 59 ft**  
HEIGHTS RELATED TO  
THR RWY 32L - ELEV 41 ft

SEOUL APP 119.75  
119.1  
GIMPO TWR 118.1  
118.05

**SEOUL/Gimpo Intl(RKSS)  
VOR RWY 32L**

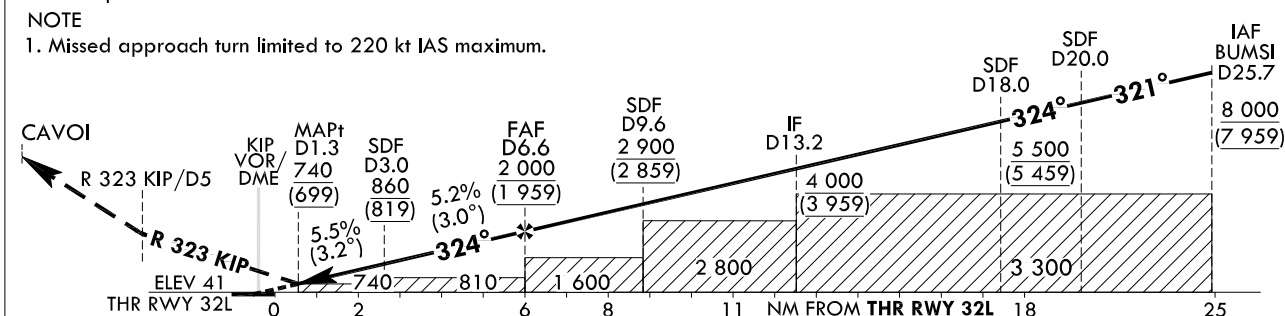
Note : Approach under ICAO Flight Procedures. 126°50'E



RECOMMENDED PROFILE					DME KIP	6	5	4	3
Final Gradient 5.2%(316.7 ft/NM) to SDF, 5.5%(335.7 ft/NM) to THR					ALT(HGT)	1 810(1 769)	1 493(1 452)	1 177(1 136)	860(819)

**MISSED APPROACH**  
Climb to 4 000 ft on R 323 KIP to 5 DME then turn left direct to CAVOI.  
Hold as published.  
NOTE  
1. Missed approach turn limited to 220 kt IAS maximum.

TRANSITION ALT 14 000  
TRANSITION LVL FL 140



CATEGORY	FULL	ALS INOP	MDA(MDH)	NM FROM THR RWY 32L					Knots						
				A	B	C	D	60	90	120	150	180			
Straight-in	FULL		740		2 500 m				Rate of descent	V/V fpm	319	478	637	797	956
	ALS INOP		(699)		3 200 m				* Timing Not authorized for defining MAPt. * Circling Not authorized.						

Change : Information of instrument approach procedure for RWY 32L.

SEOUL/Gimpo Intl(RKSS)  
VOR RWY 32L

AERONAUTICAL DATA TABULATION

VOR Approach to RWY 32L from BUMSI		
Fix / Point		Coordinates
BUMSI(IAF)		37°15'10.2"N 127°10'09.6"E
D20 KIP(SDF)	BRG 320.65°/5.68 NM	37°19'00.4"N 127°04'54.7"E
D18 KIP(SDF)	BRG 324.48°/18.00 NM KIP	37°20'27.2"N 127°03'10.7"E
D13.2 KIP(IF)	BRG 324.48°/13.20 NM KIP	37°23'55.4"N 126°59'00.7"E
D9.6 KIP(SDF)	BRG 324.48°/9.60 NM KIP	37°26'31.4"N 126°55'52.9"E
D6.6 KIP(FAF)	BRG 324.48°/6.60 NM KIP	37°28'41.4"N 126°53'16.3"E
D3.0 KIP(SDF)	BRG 324.48°/3.00 NM KIP	37°31'17.3"N 126°50'08.2"E
D1.3 KIP(MAPt)	BRG 324.48°/1.30 NM KIP	37°32'30.8"N 126°48'39.2"E
THR RWY 32L	Final approach descent angle 2.98°(FAF - SDF)/3.16°(SDF - THR)	37°32'52.83"N 126°48'03.71"E
KIP VOR/DME		37°33'27.1"N 126°47'31.3"E
D5 KIP	R 323 KIP/5.00 NM	37°36'59.7"N 126°43'04.6"E
CAVOI	BRG 223.11°/19.00 NM SEL	37°32'02.0"N 126°33'37.0"E

Change : Information of instrument approach procedure for RWY 32L.



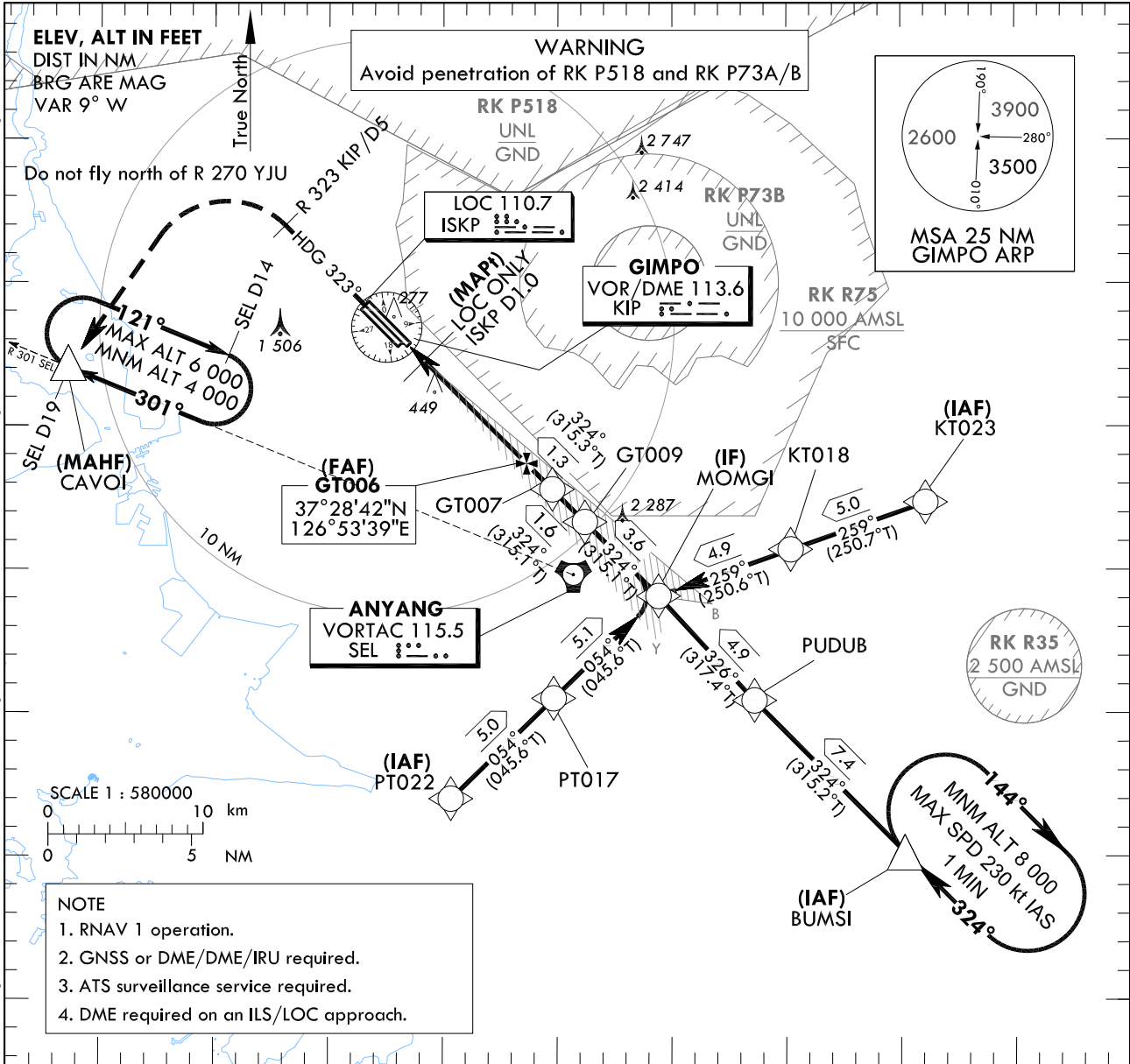
**INSTRUMENT  
APPROACH  
CHART - ICAO**

**AERODROME ELEV 59 ft**  
HEIGHTS RELATED TO  
THR RWY 32R - ELEV 42 ft

SEOUL APP 119.75  
119.1  
GIMPO TWR 118.1  
118.05

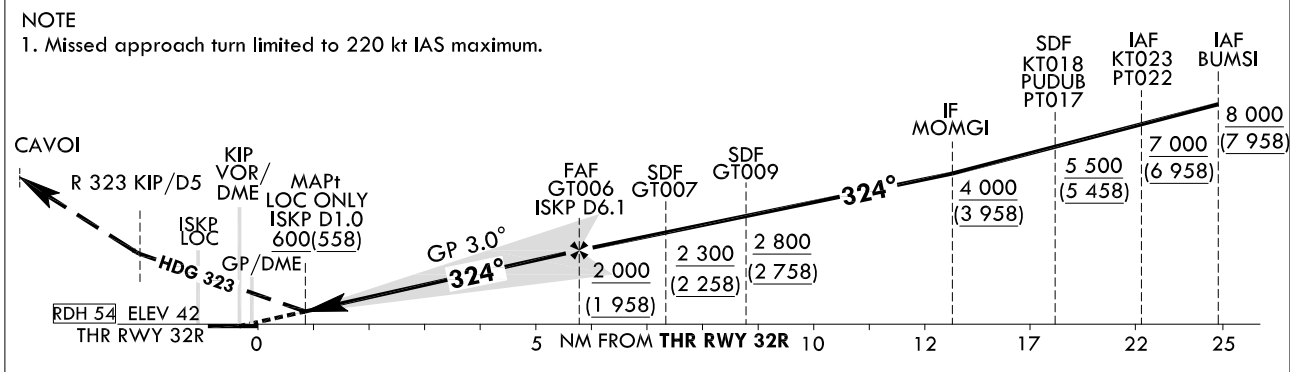
**SEOUL/Gimpo Intl(RKSS)  
ILS or LOC RWY 32R**

Note : Approach under ICAO Flight Procedures.



RECOMMENDED PROFILE	DME ISKP	6	5	4	3	2
Final Approach Gradient 5.24%, 318 ft/NM	ALT(HGT)	1 968 (1 926)	1 656 (1 614)	1 330 (1 288)	1 005 (963)	682 (640)

TRANSITION ALT 14 000  
TRANSITION LVL FL 140



CATEGORY	DA(DH)/MDA(MDH)	MISSED APPROACH			
		A	B	C	D
Straight-in	CAT-I	FULL	RVR 550 m, VIS 800 m		
		ALS INOP	1 200 m		
	LOC	GP INOP	1 800 m		
		GP & ALS INOP	2 500 m		

**MISSED APPROACH**  
After 500 ft, Climb on HDG 323° to R 323 KIP/D5. Continue climb to 4 000 ft. Turn left direct to CAVOI. Hold as published.  
\* Timing Not authorized for defining MAPt.  
\* Circling Not authorized.

Change : Information of instrument approach procedure for RWY 32R.

SEOUL/Gimpo Intl(RKSS)  
ILS or LOC RWY 32R

AERONAUTICAL DATA TABULATION

ILS/LOC Approach to RWY 32R from KT023 to MOMGI(IF)		
Fix / Point	Coordinates	
KT023(IAF)	37°27'20.9"N 127°11'04.4"E	
KT018(SDF)	BRG 259.29°/5.00 NM	37°25'41.9"N 127°05'11.1"E
MOMGI(IF)	BRG 259.23°/4.87 NM	37°24'04.7"N 126°59'25.2"E
ILS/LOC Approach to RWY 32R from BUMSI to MOMGI(IF)		
Fix / Point	Coordinates	
BUMSI(IAF)	37°15'10.2"N 127°10'09.6"E	
PUDUB(SDF)	BRG 323.86°/7.42 NM	37°20'26.5"N 127°03'36.6"E
MOMGI(IF)	BRG 326.03°/4.93 NM	37°24'04.7"N 126°59'25.2"E
ILS/LOC Approach to RWY 32R from PT022 to MOMGI(IF)		
Fix / Point	Coordinates	
PT022(IAF)	37°17'00.6"N 126°50'21.9"E	
PT017(SDF)	BRG 54.22°/5.00 NM	37°20'30.7"N 126°54'50.7"E
MOMGI(IF)	BRG 54.26°/5.10 NM	37°24'04.7"N 126°59'25.2"E
ILS/LOC Approach to RWY 32R from MOMGI(IF) to MAHF		
Fix / Point	Coordinates	
GT009(SDF)	BRG 323.75°/9.00 NM ISKP	37°26'39.3"N 126°56'12.2"E
GT007(SDF)	BRG 323.75°/7.40 NM ISKP	37°27'47.4"N 126°54'47.0"E
GT006(FAF)	BRG 323.90°/6.10 NM ISKP	37°28'42.2"N 126°53'38.9"E
D1.0 ISKP (MAPt LOC ONLY)	BRG 323.90°/1.00 NM ISKP	37°32'16.7"N 126°49'09.7"E
THR RWY 32R	37°32'51.89"N 126°48'25.58"E	
ISKP DME	37°32'56.3"N 126°48'12.9"E	
KIP VOR/DME	37°33'27.1"N 126°47'31.3"E	
Climb to 500 ft	HDG 323	-
D5 KIP	R 323 KIP/5.00 NM	37°36'59.7"N 126°43'04.6"E
CAVOI	BRG 222.76°/19.00 NM SEL	37°32'02.0"N 126°33'37.0"E

Change : Information of instrument approach procedure for RWY 32R.

**INSTRUMENT  
APPROACH  
CHART - ICAO**

**AERODROME ELEV 59 ft**  
HEIGHTS RELATED TO  
THR RWY 32R - ELEV 42 ft

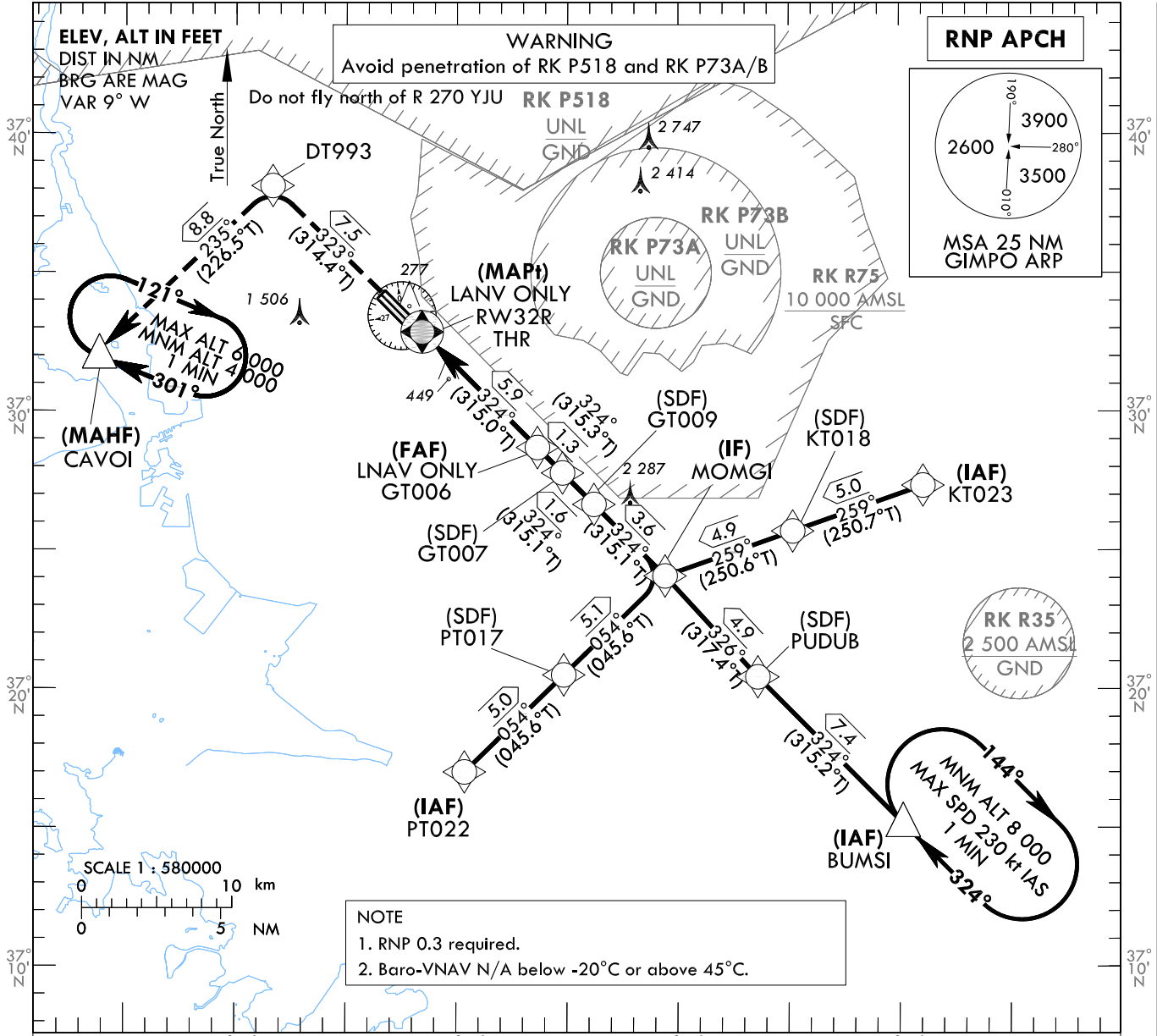
SEOUL APP 119.75  
119.1  
GIMPO TWR 118.1  
118.05

**SEOUL/Gimpo Intl(RKSS)  
RNP RWY 32R**

Note : Approach under ICAO Flight Procedures.

126°50'E

127°10'E

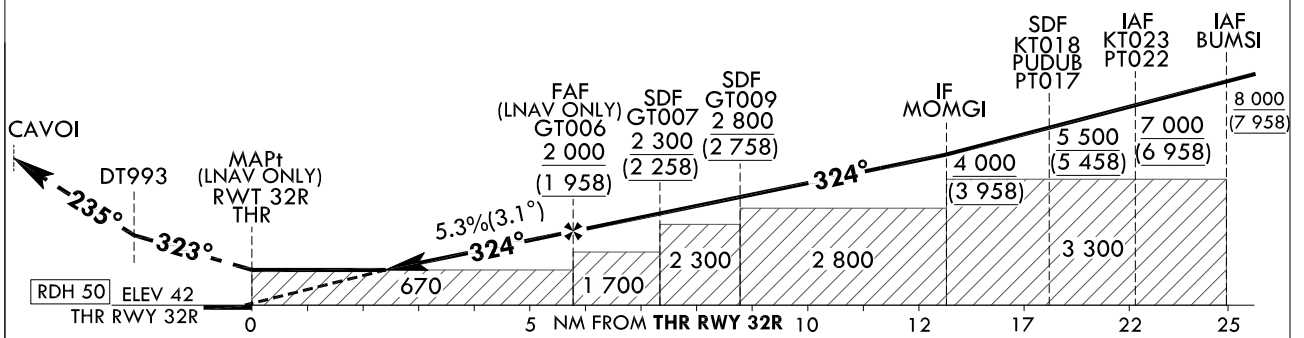


**NOTE**  
1. RNP 0.3 required.  
2. Baro-VNAV N/A below -20°C or above 45°C.

**MISSED APPROACH**

Climb to 4 000 ft. Track to DT993 and CAVOI. Hold as published.

TRANSITION ALT 14 000  
TRANSITION LVL FL 140



CATEGORY		MDA(H)/DA(H)	A	B	C	D	Knots						
STA	LNAV	FULL	670 (628)	2 200 m			Rate of descent	V/V fpm	325	487	649	812	974
		ALS INOP		2 900 m									
	LNAV/VNAV	FULL	600 (558)	1 800 m									
		ALS INOP		2 500 m									

Change : Information of instrument approach procedure for RWY 32R.

AERONAUTICAL DATA TABULATION

Instrument Approach Procedure Coding Tables

RNP RWY 32R - via KT023 to MOMGI(IF)

Serial Number	Path Descriptor	Waypoint Identifier	Fly-over	Course/Track °M(°T)	Distance (NM)	Turn direction	Altitude (ft)	Speed (kt)	Coordinates	VPA/RDH	Navigation specification	Remarks
001	IF	KT023	-	-	-	-	+7 000	-	37°27'20.9"N 127°11'04.4"E	-	RNP APCH	IAF
002	TF	KT018	-	259 (250.7)	5.0	-	+5 500	-	37°25'41.9"N 127°05'11.1"E	-	RNP APCH	SDF
003	TF	MOMGI	-	259 (250.6)	4.9	-	+4 000	-	37°24'04.7"N 126°59'25.2"E	-	RNP APCH	IF

RNP RWY 32R - via BUMSI to MOMGI(IF)

Serial Number	Path Descriptor	Waypoint Identifier	Fly-over	Course/Track °M(°T)	Distance (NM)	Turn direction	Altitude (ft)	Speed (kt)	Coordinates	VPA/RDH	Navigation specification	Remarks
001	IF	BUMSI	-	-	-	-	+8 000	-	37°15'10.2"N 127°10'09.6"E	-	RNP APCH	IAF
002	TF	PUDUB	-	324 (315.2)	7.4	-	+5 500	-	37°20'26.5"N 127°03'36.6"E	-	RNP APCH	SDF
003	TF	MOMGI	-	326 (317.4)	4.9	-	+4 000	-	37°24'04.7"N 126°59'25.2"E	-	RNP APCH	IF

RNP RWY 32R - via PT022 to MOMGI(IF)

Serial Number	Path Descriptor	Waypoint Identifier	Fly-over	Course/Track °M(°T)	Distance (NM)	Turn direction	Altitude (ft)	Speed (kt)	Coordinates	VPA/RDH	Navigation specification	Remarks
001	IF	PT022	-	-	-	-	+7 000	-	37°17'00.6"N 126°50'21.9"E	-	RNP APCH	IAF
002	TF	PT017	-	054 (045.6)	5.0	-	+5 500	-	37°20'30.7"N 126°54'50.7"E	-	RNP APCH	SDF
003	TF	MOMGI	-	054 (045.6)	5.1	-	+4 000	-	37°24'04.7"N 126°59'25.2"E	-	RNP APCH	IF

RNP RWY 32R - via MOMGI(IF) to MAHF

Serial Number	Path Descriptor	Waypoint Identifier	Fly-over	Course/Track °M(°T)	Distance (NM)	Turn direction	Altitude (ft)	Speed (kt)	Coordinates	VPA/RDH	Navigation specification	Remarks
003	TF	MOMGI	-	-	-	-	+4 000	-	37°24'04.7"N 126°59'25.2"E	-	RNP APCH	IF
004	TF	GT009	-	324 (315.1)	3.6	-	+2 800	-	37°26'39.3"N 126°56'12.2"E	-	RNP APCH	SDF
005	TF	GT007	-	324 (315.1)	1.6	-	+2 300	-	37°27'47.4"N 126°54'47.0"E	-	RNP APCH	SDF
006	TF	GT006	-	324 (315.3)	1.3	-	+2 000	-	37°28'42.2"N 126°53'38.9"E	-	RNP APCH	FAF
007	TF	RW32R	Y	324 (315.0)	5.9	-	+670	-	37°32'51.89"N 126°48'25.58"E	-3.06/50	RNP APCH	MAPt
008	TF	DT993	-	323 (314.4)	7.5	-	-	-	37°38'07.5"N 126°41'39.6"E	-	RNP APCH	-
009	TF	CAVOI	Y	235 (226.5)	8.8	-	+4 000	-	37°32'02.0"N 126°33'37.0"E	-	RNP APCH	-

HOLDING PROCEDURE

Holding Identification	Path Descriptor	Waypoint Identifier	Fly-over	Course/Track °M(°T)	Time (min)	Turn direction	Altitude (ft)	Speed (kt)	Coordinates	VPA/RDH	Navigation specification	Remarks
RNP RWY 32R	HM	BUMSI	Y	324 (315.2)	1	R	+8 000	-230	37°15'10.2"N 127°10'09.6"E	-	RNAV 1	-
	HM	CAVOI	Y	301 (292.2)	1	R	-6 000 +4 000	-	37°32'02.0"N 126°33'37.0"E	-	RNAV 1	-

Change : Information of instrument approach procedure for RWY 32R.

**INSTRUMENT  
APPROACH  
CHART - ICAO**

**AERODROME ELEV 59 ft**  
HEIGHTS RELATED TO  
THR RWY 32R - ELEV 42 ft

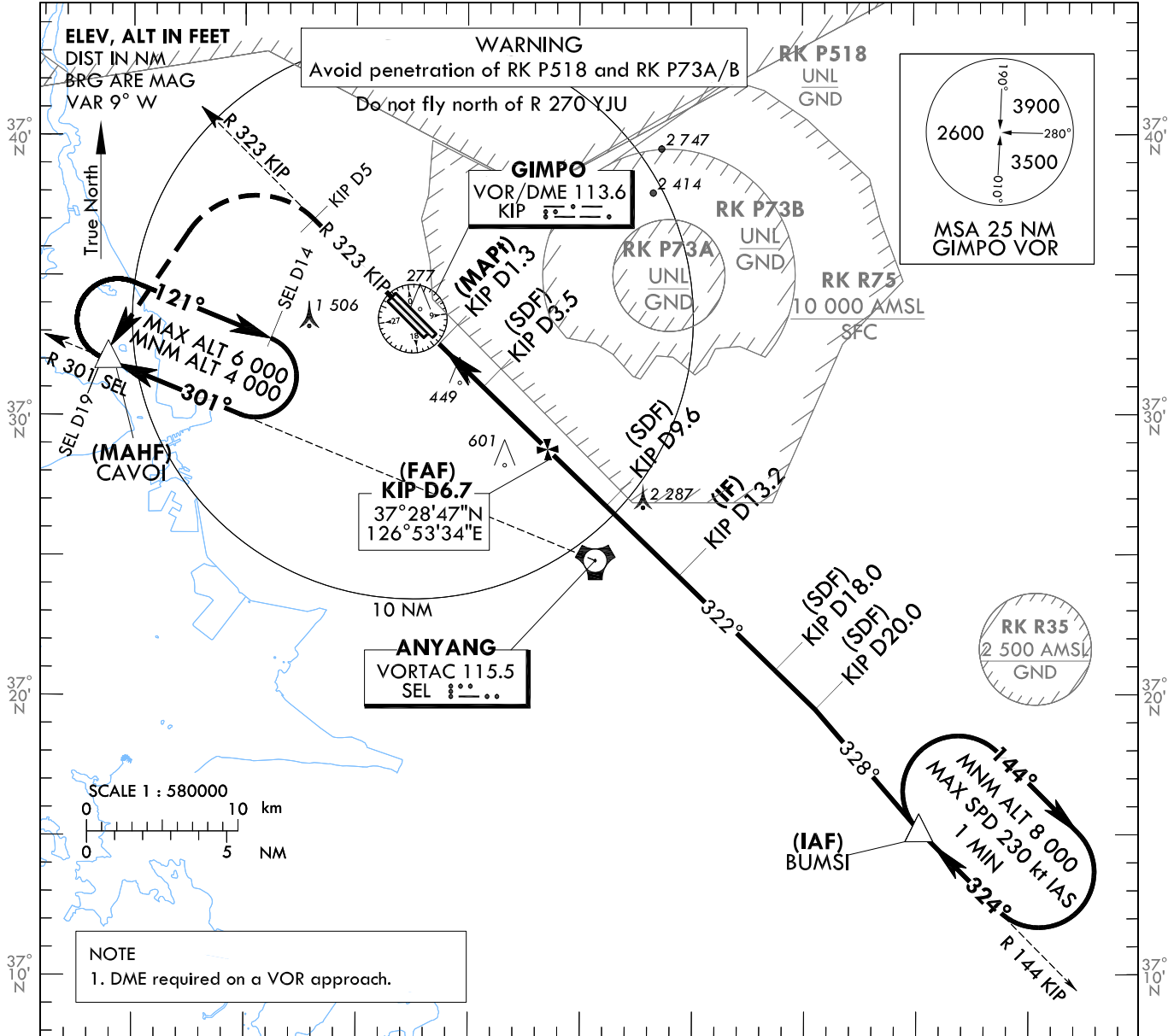
SEOUL APP 119.75  
119.1  
GIMPO TWR 118.1  
118.05

**SEOUL/Gimpo Intl(RKSS)  
VOR RWY 32R**

Note : Approach under ICAO Flight Procedures.

126°50'E

127°10'E



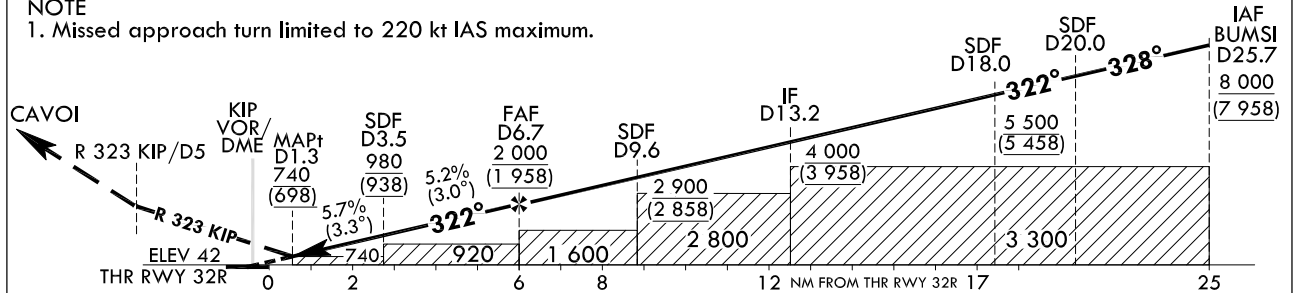
NOTE  
1. DME required on a VOR approach.

RECOMMENDED PROFILE		DME KIP	6	5	4	3
Final Gradient	5.2%(318.8 ft/NM) to SDF, 5.7%(345.5 ft/NM) to THR	ALT(HGT)	1 779 (1 737)	1 460 (1 418)	1 141 (1 399)	809 (767)

**MISSED APPROACH**  
Climb to 4 000 ft on R 323 KIP to 5 DME then turn left direct to CAVOI.  
Hold as published.

TRANSITION ALT 14 000  
TRANSITION LVL FL 140

NOTE  
1. Missed approach turn limited to 220 kt IAS maximum.



CATEGORY	MDA(MDH)	A				B				C				D				Knots	60	90	120	150	180	
		A				B				C				D										
Straight-in	FULL	740 (698)	2 500 m				2 500 m				2 500 m				2 500 m				Rate of descent V/V fpm	331	486	661	827	992
	ALS INOP		3 200 m				3 200 m				3 200 m				3 200 m					* Timing Not authorized for defining MAPt. * Circling Not authorized.				

Change : Information of instrument approach procedure for RWY 32R.

SEOUL/Gimpo Intl(RKSS)  
VOR RWY 32R

AERONAUTICAL DATA TABULATION

VOR Approach to RWY 32R from BUMSI		
Fix / Point		Coordinates
BUMSI(IAF)		37°15'10.2"N 127°10'09.6"E
D20 KIP(SDF)	BRG 327.70°/5.69 NM	37°19'29.9"N 127°05'32.0"E
D18 KIP(SDF)	BRG 322.48°/18.00 NM KIP	37°20'53.8"N 127°03'44.2"E
D13.2 KIP(IF)	BRG 322.48°/13.20 NM KIP	37°24'15.2"N 126°59'25.7"E
D9.6 KIP(SDF)	BRG 322.48°/9.60 NM KIP	37°26'45.9"N 126°56'11.2"E
D6.7 KIP(FAF)	BRG 322.48°/6.70 NM KIP	37°28'47.0"N 126°53'34.1"E
D3.5 KIP(SDF)	BRG 322.48°/3.50 NM KIP	37°31'00.8"N 126°50'40.9"E
D1.3 KIP(MAPt)	BRG 322.48°/1.30 NM KIP	37°32'32.8"N 126°48'41.7"E
THR RWY 32R	Final approach descent angle 3.00°(FAF - SDF)/3.25°(SDF - THR)	37°32'51.89"N 126°48'25.58"E
KIP VOR/DME		37°33'27.1"N 126°47'31.3"E
D5 KIP	R 323 KIP/5.00 NM	37°36'59.7"N 126°43'04.6"E
CAVOI	BRG 223.11°/19.00 NM SEL	37°32'02.0"N 126°33'37.0"E

Change : Information of instrument approach procedure for RWY 32R.